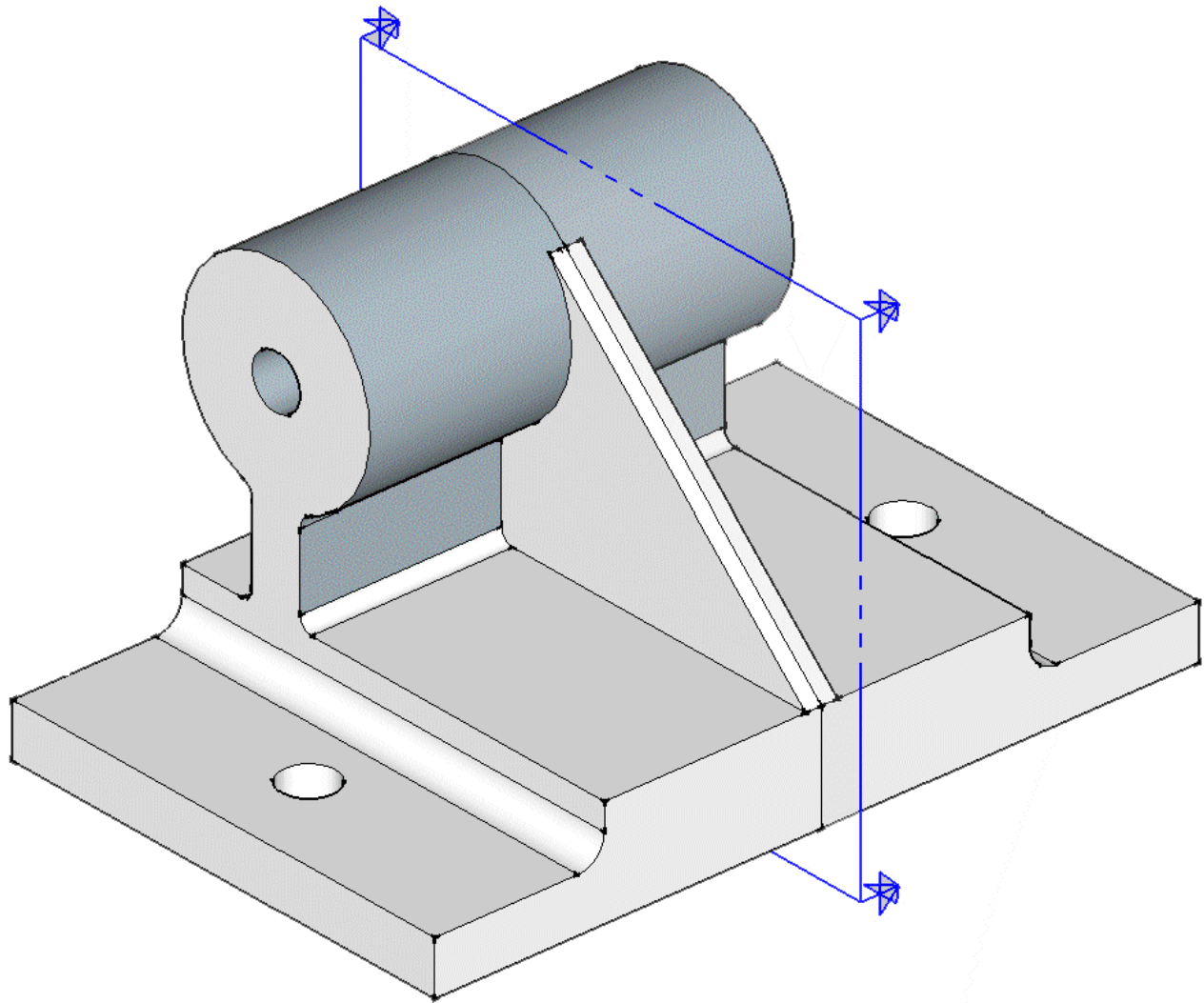


Sectional Views Exercise iii

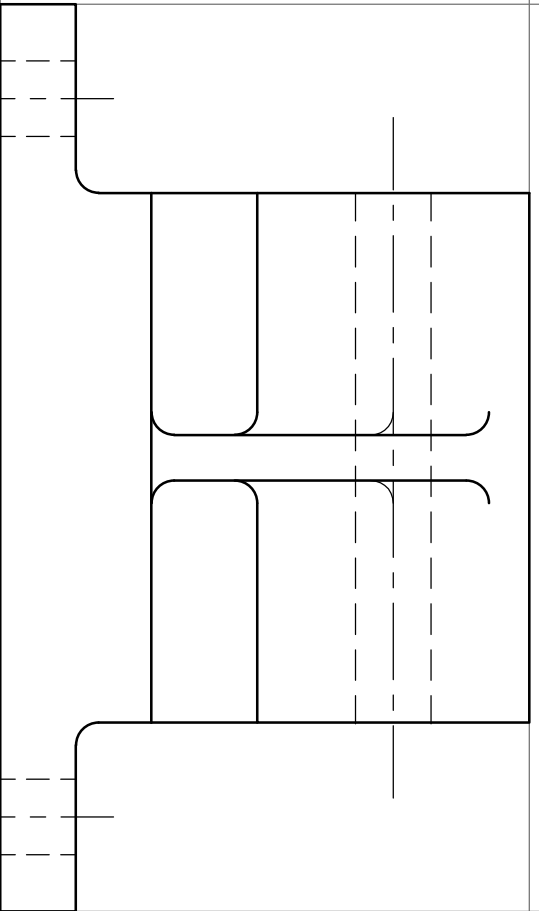
A pictorial view and two orthographic elevations of a CAST STEEL BRACKET are given.

- Draw a **Sectional End elevation Y-Y**.
- Draw the symbol of the projection used.



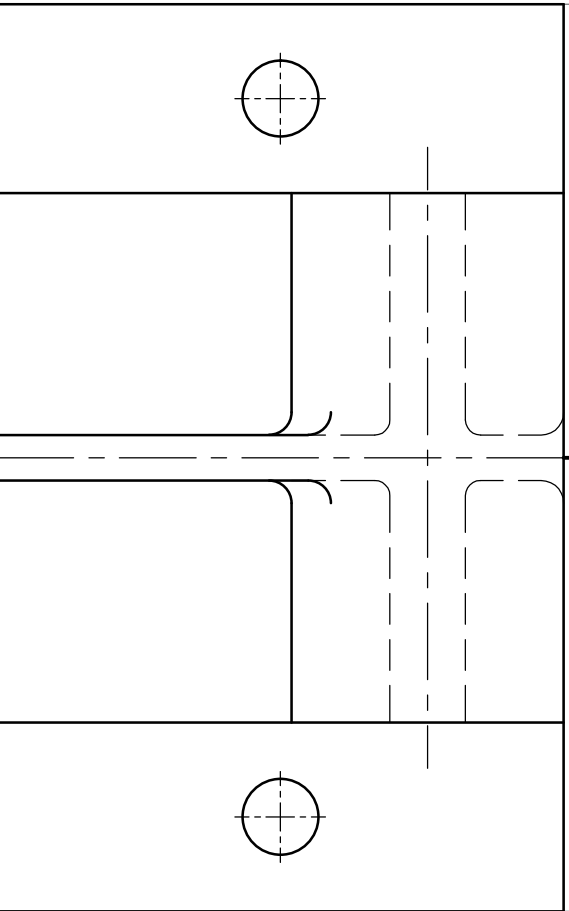
Annual Exam 2010 Form 4 yr. 4 Question 1
Educational Assessment Unit D.Q.S.E.

Sectional Views Exercise iii



Y

FRONT

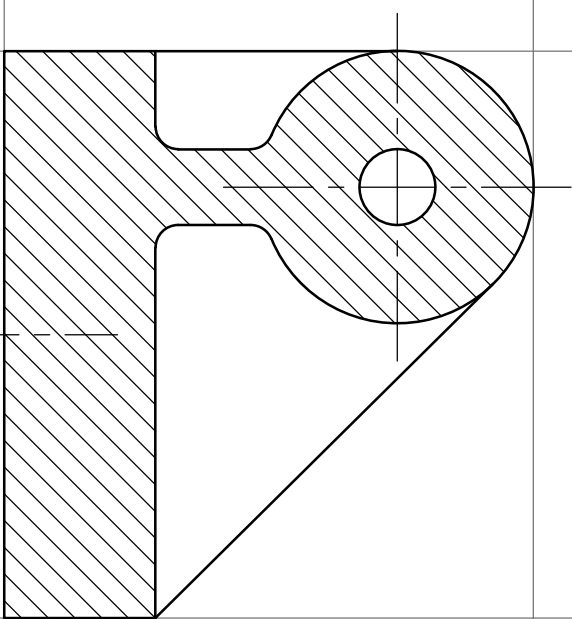
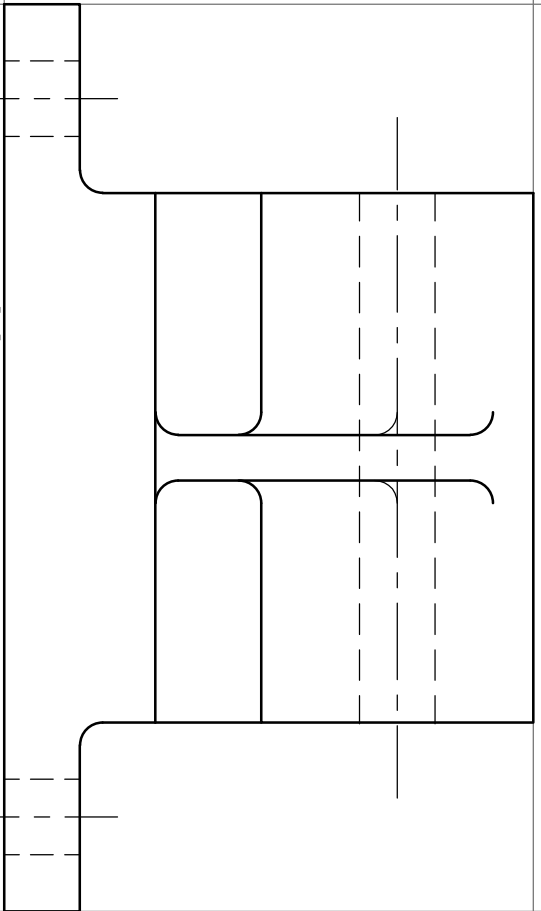


Y

PLAN

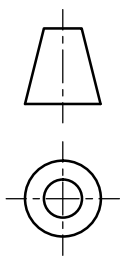
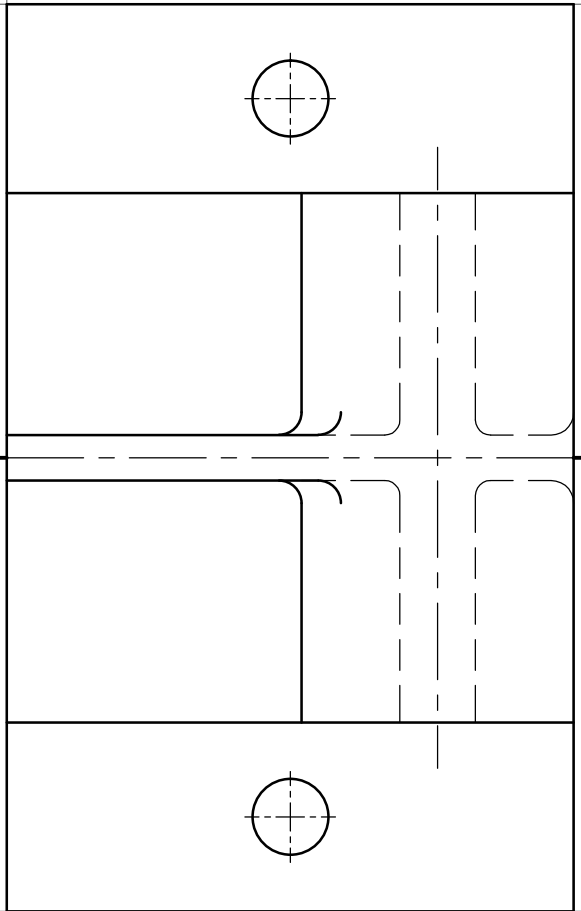
SECTIONAL END Y-Y

Sectional Views Exercise iii - ANS



FRONT

SECTIONAL END Y-Y



PLAN