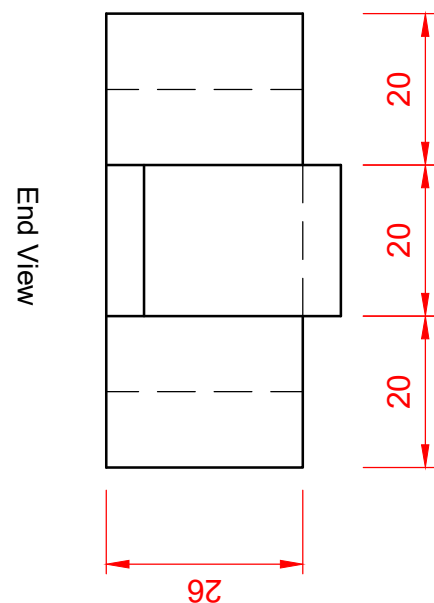
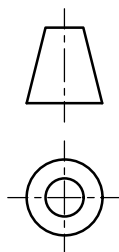
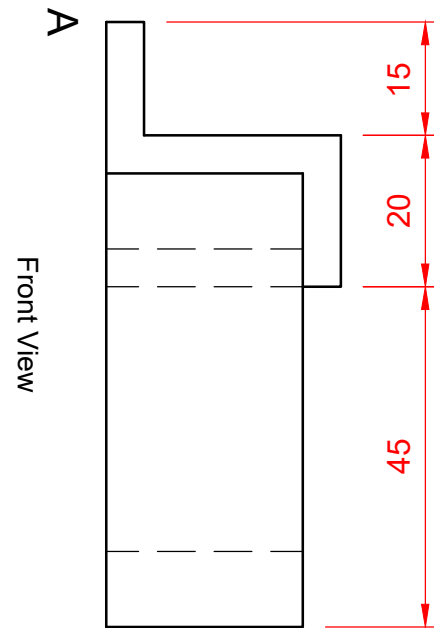
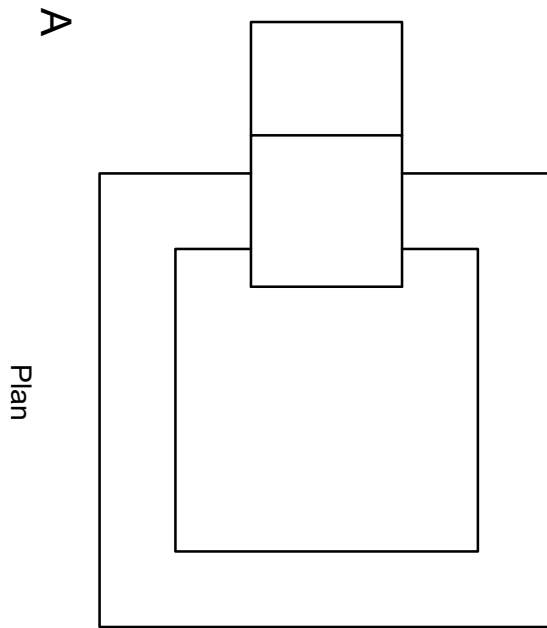


Orthographic to Pictorial Projection Exercise 7

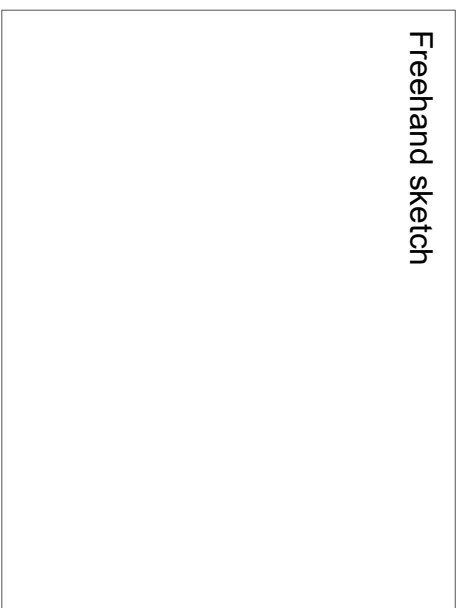
Use the space on the answer sheet to draw a freehand sketch of the object in any pictorial projection. Then draw the same block using instruments. You can choose between isometric, oblique or planometric projection for your answer.

Material thicknesses are 5mm and 10mm throughout.



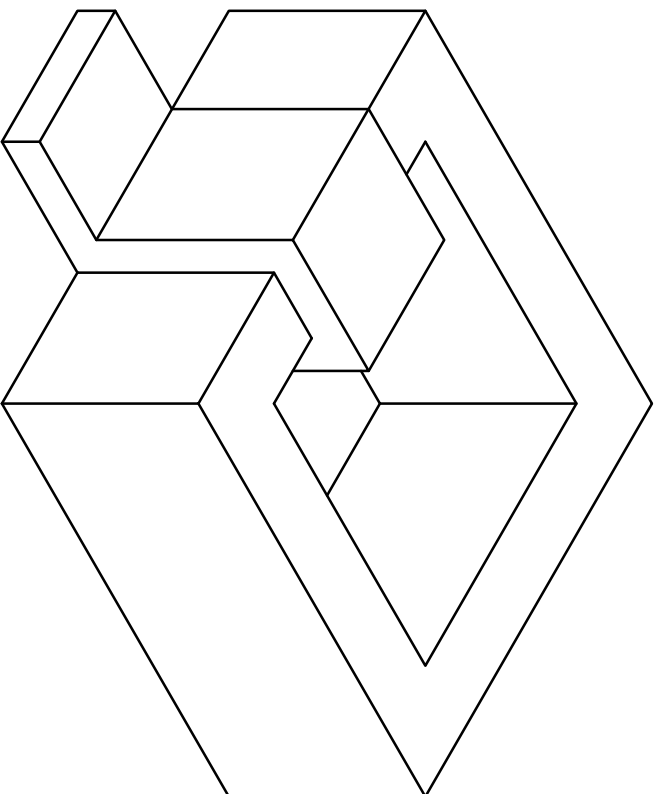
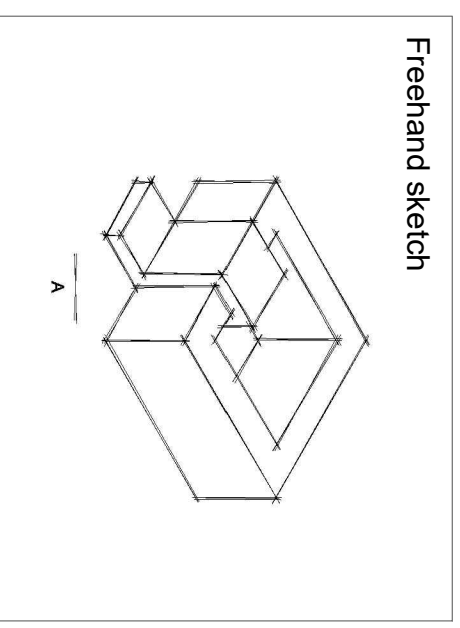
Orthographic to Pictorial Projection Exercise 7 - STARTER SHEET

Freehand sketch



Orthographic to Pictorial Projection Exercise 7 - ANSWER SHEET

Freehand sketch



A

You can visit: <https://youtu.be/P3nhR1tV/A-c> for a video of the object rotating in space. This video should only be used in case of difficulty, as it diminishes the scope of this exercise which is to train your visualisation skills.