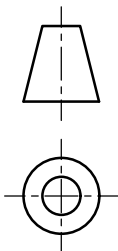
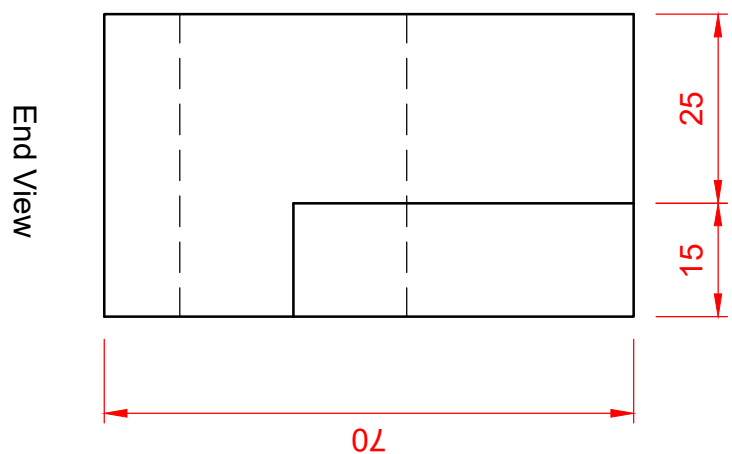
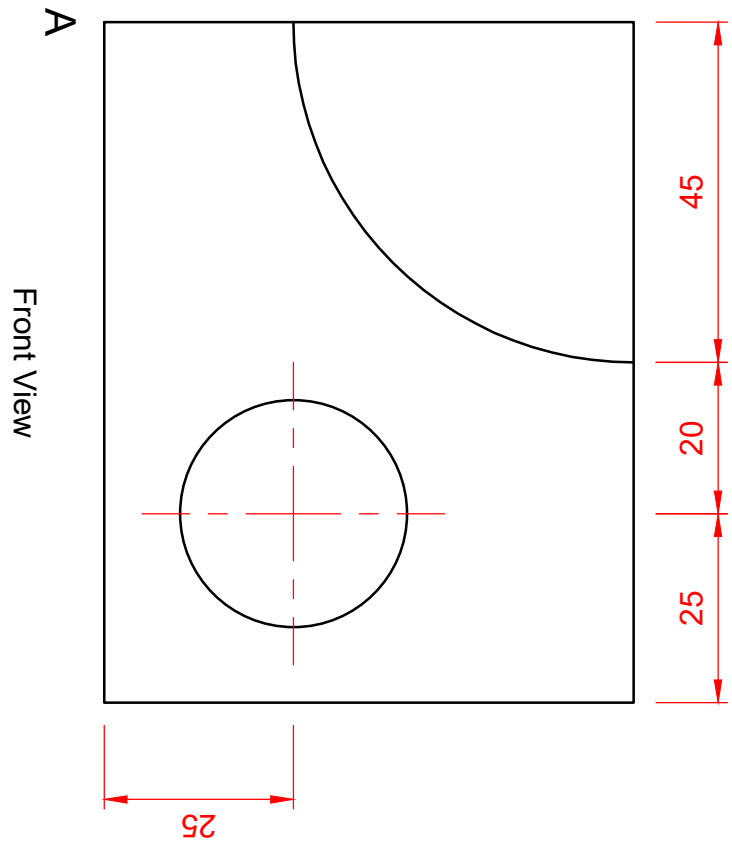
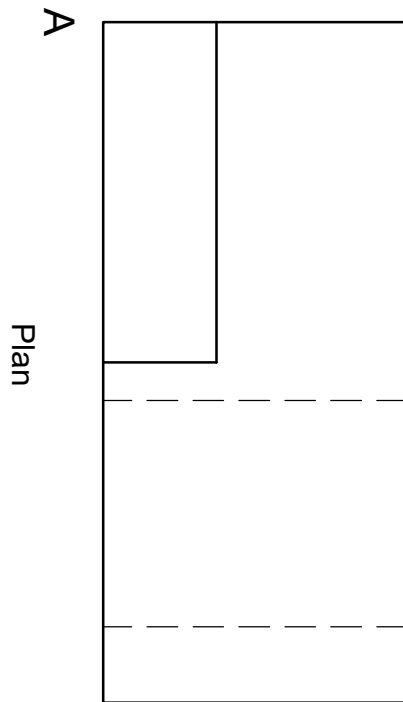


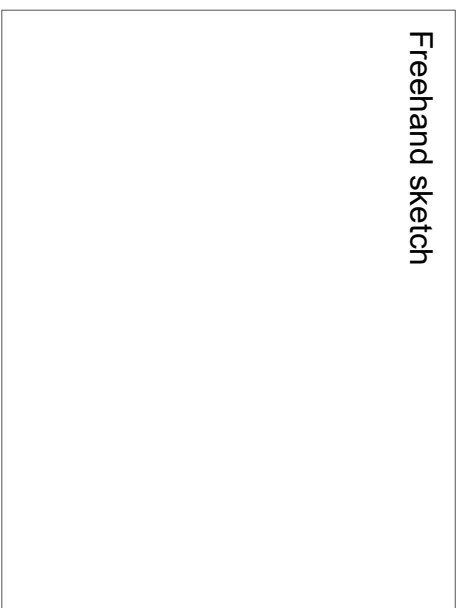
Orthographic to Pictorial Projection Exercise 12

Use the space on the answer sheet to draw a freehand sketch of the object in any pictorial projection. Then draw the same block using instruments. You can chose between isometric, oblique or planometric projection for your answer.

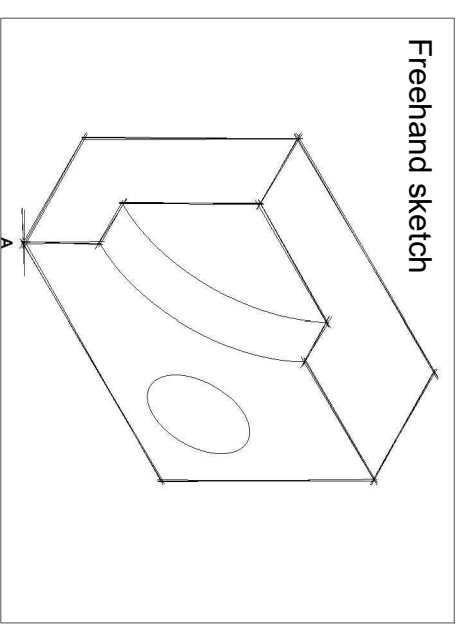
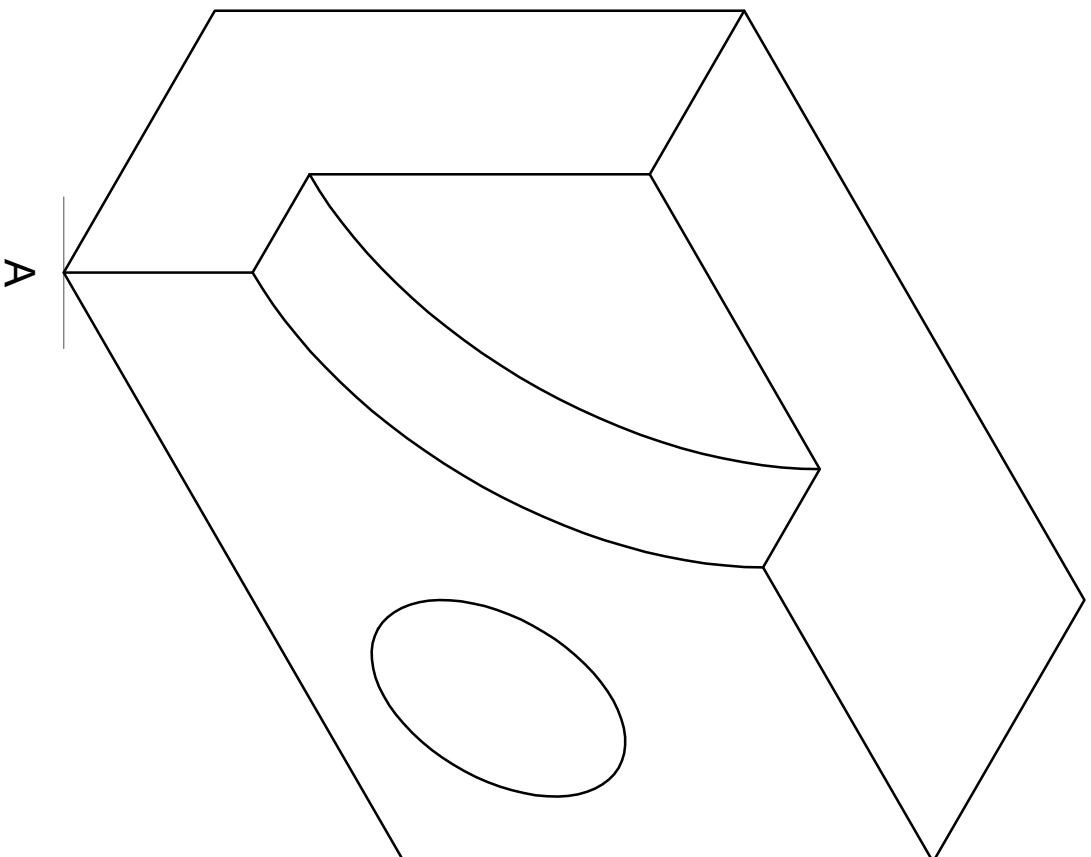


Orthographic to Pictorial Projection Exercise 12 - STARTER SHEET

Freehand sketch



Orthographic to Pictorial Projection Exercise 12 - ANSWER SHEET



You can visit: <https://youtu.be/FZyckukYD4> for a video of the object rotating in space. This video should only be used in case of difficulty, as it diminishes the scope of this exercise which is to train your visualisation skills.